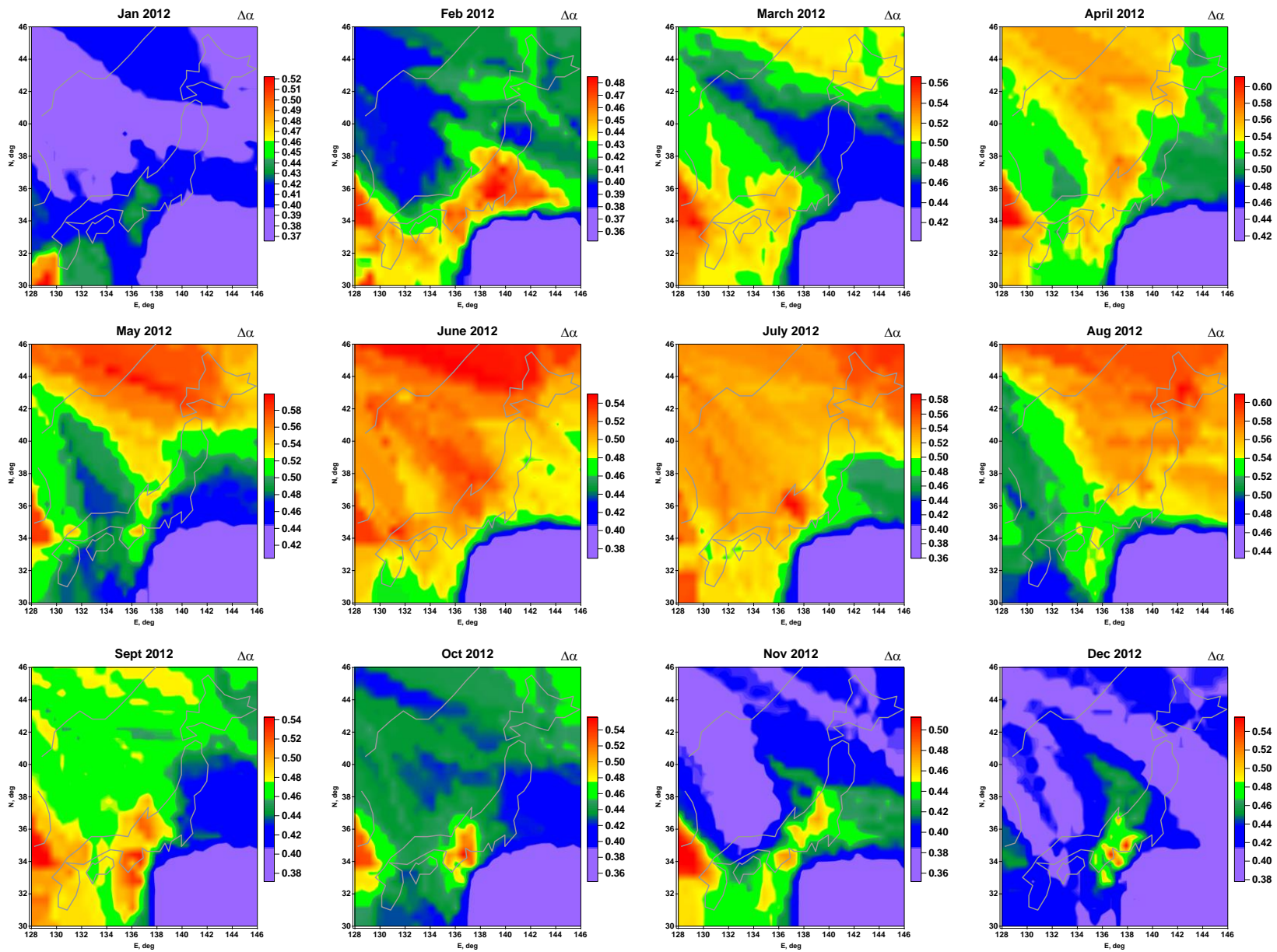
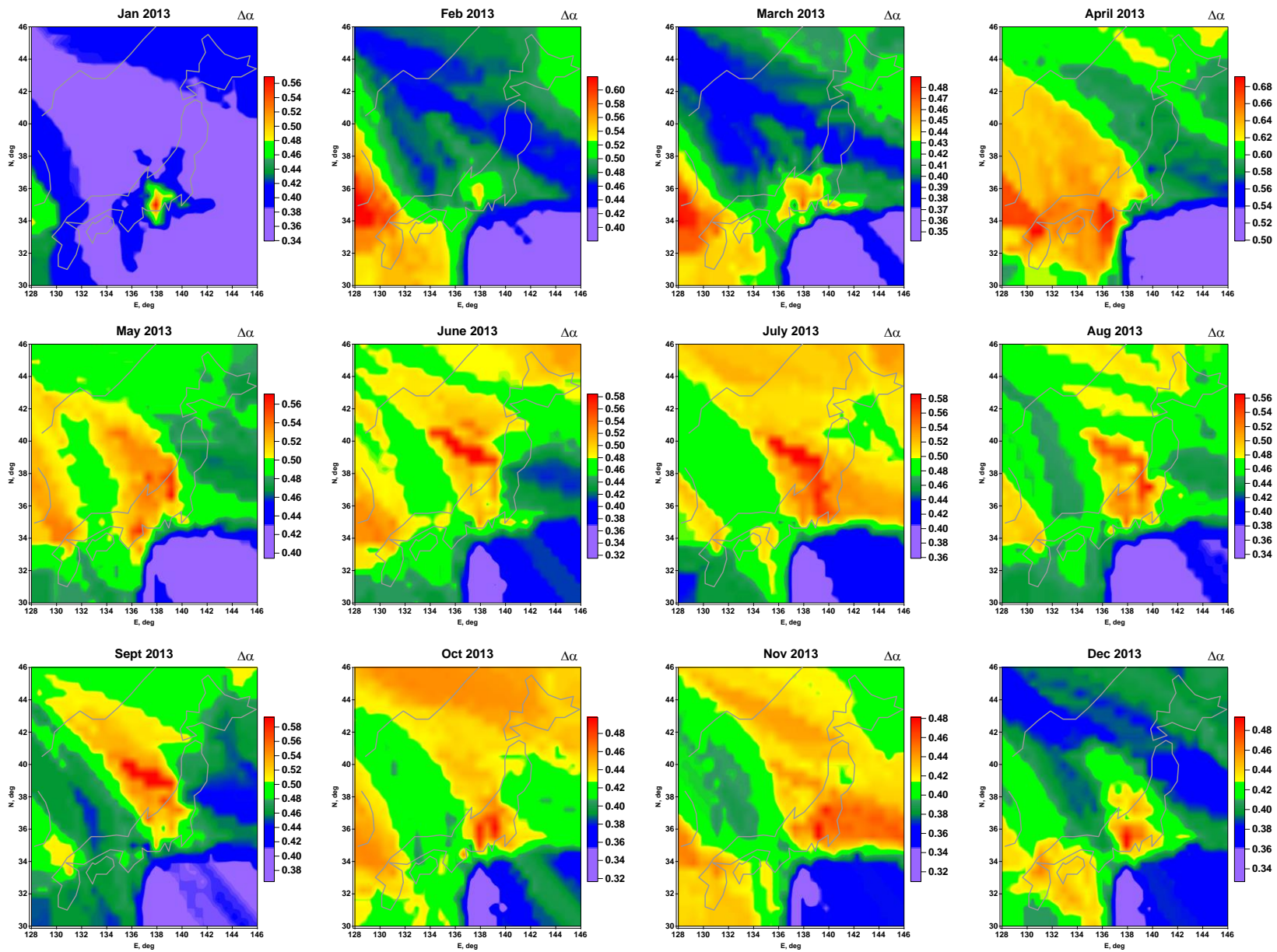


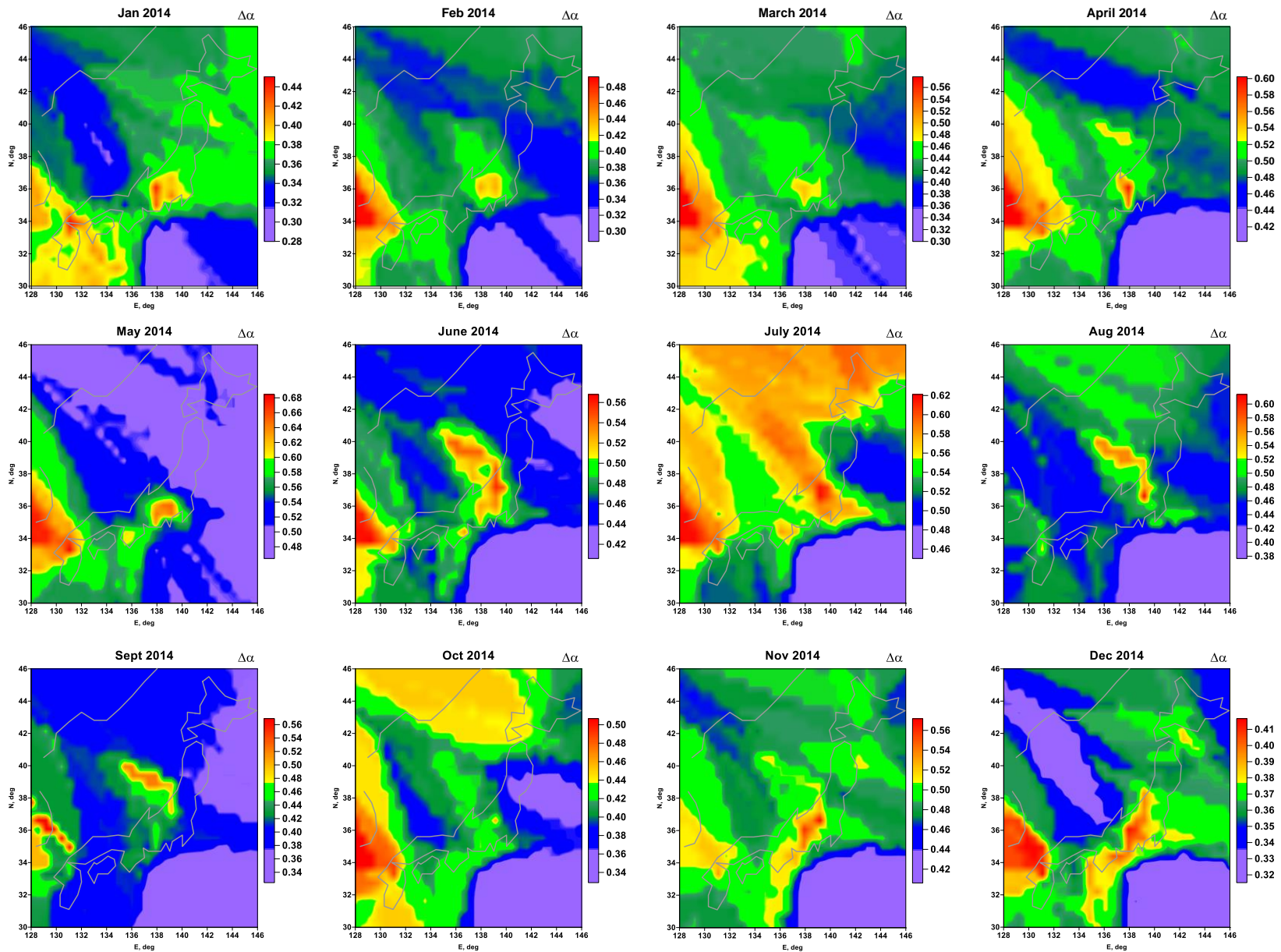
**Multifractal singularity
spectrum support width for low-
frequency seismic noise in
Japan – averaged monthly
maps**



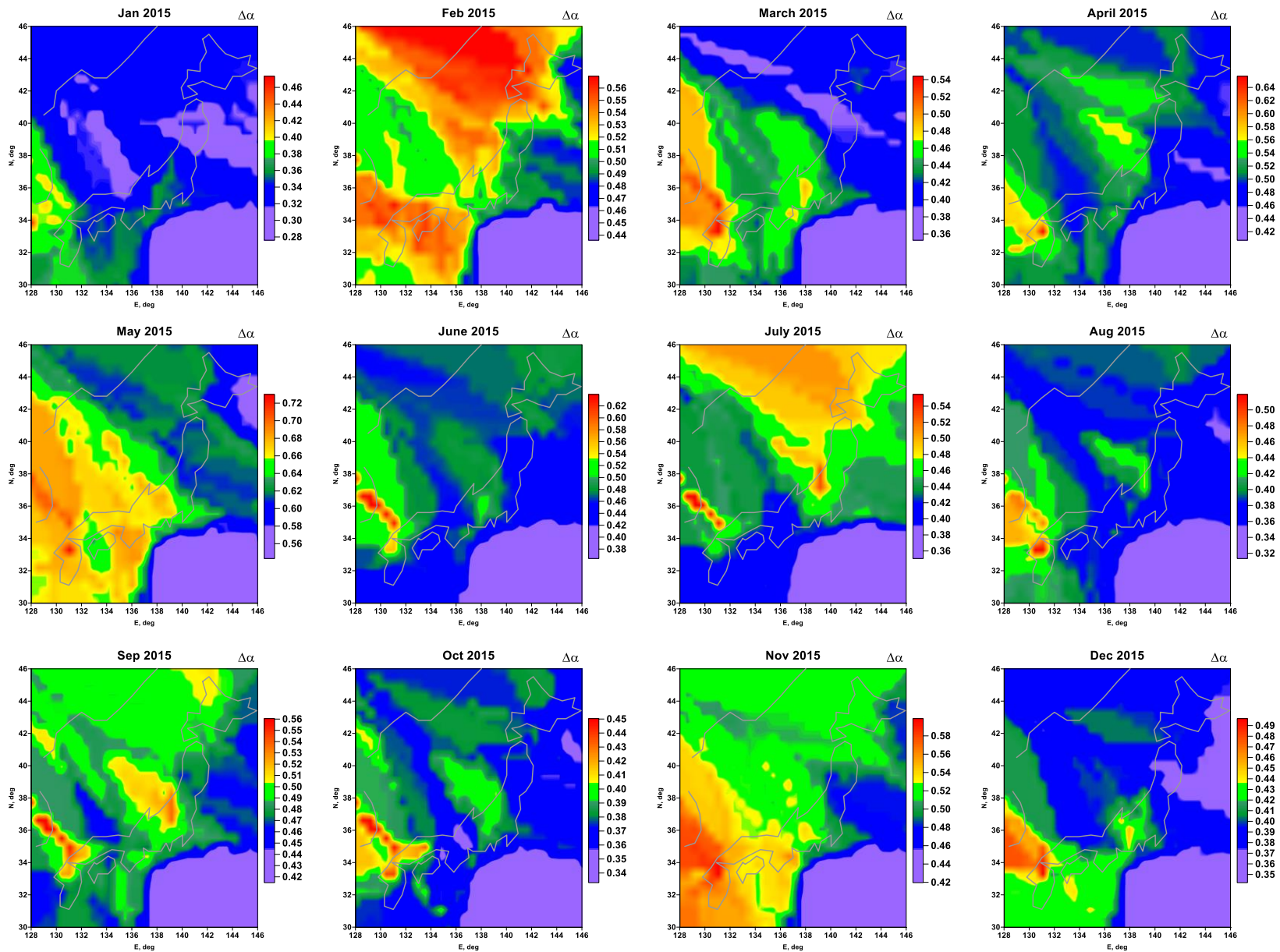
Monthly maps of singularity spectrum support width $\Delta\alpha$, corresponding to 2012



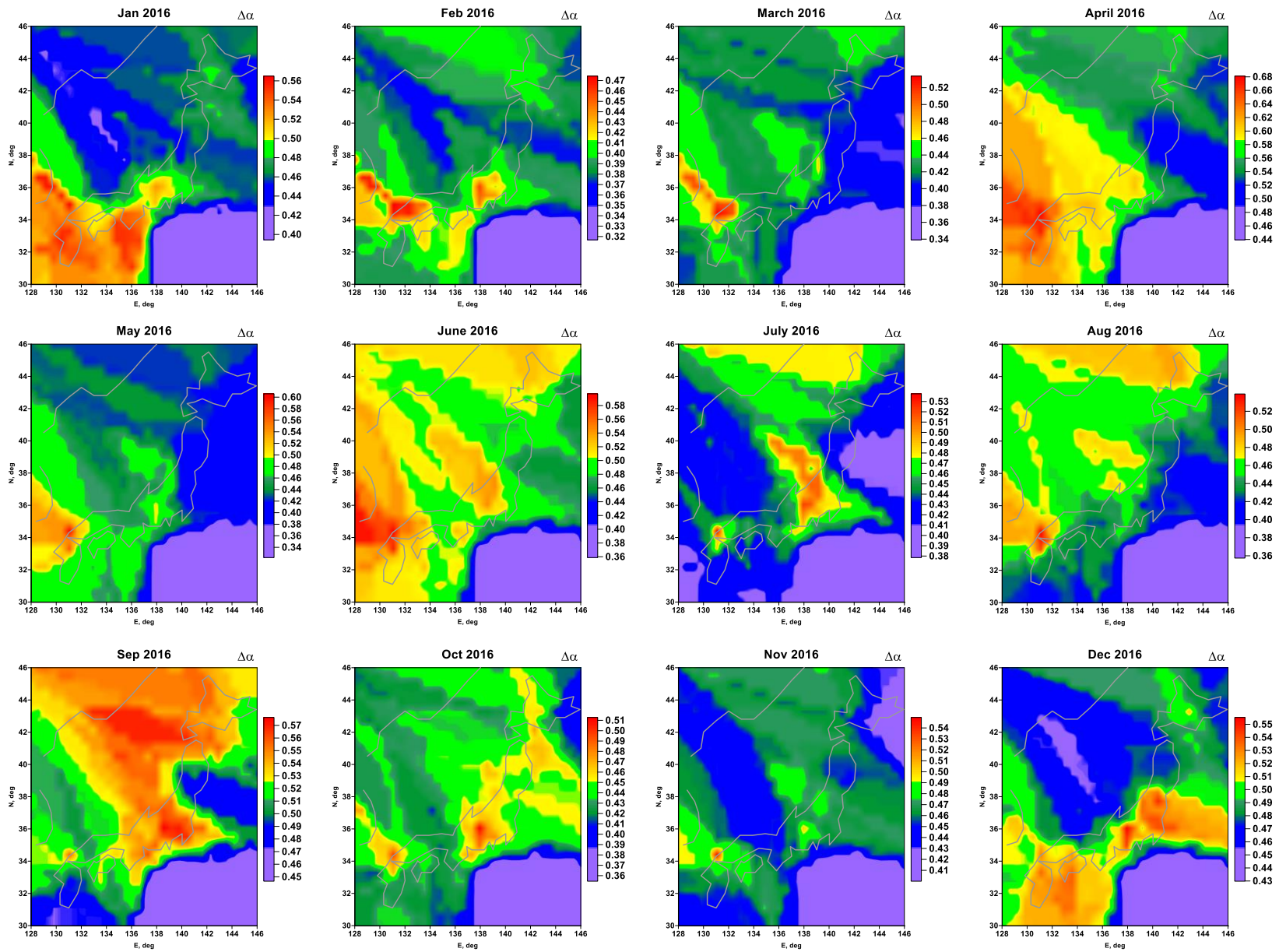
Monthly maps of singularity spectrum support width $\Delta\alpha$, corresponding to 2013



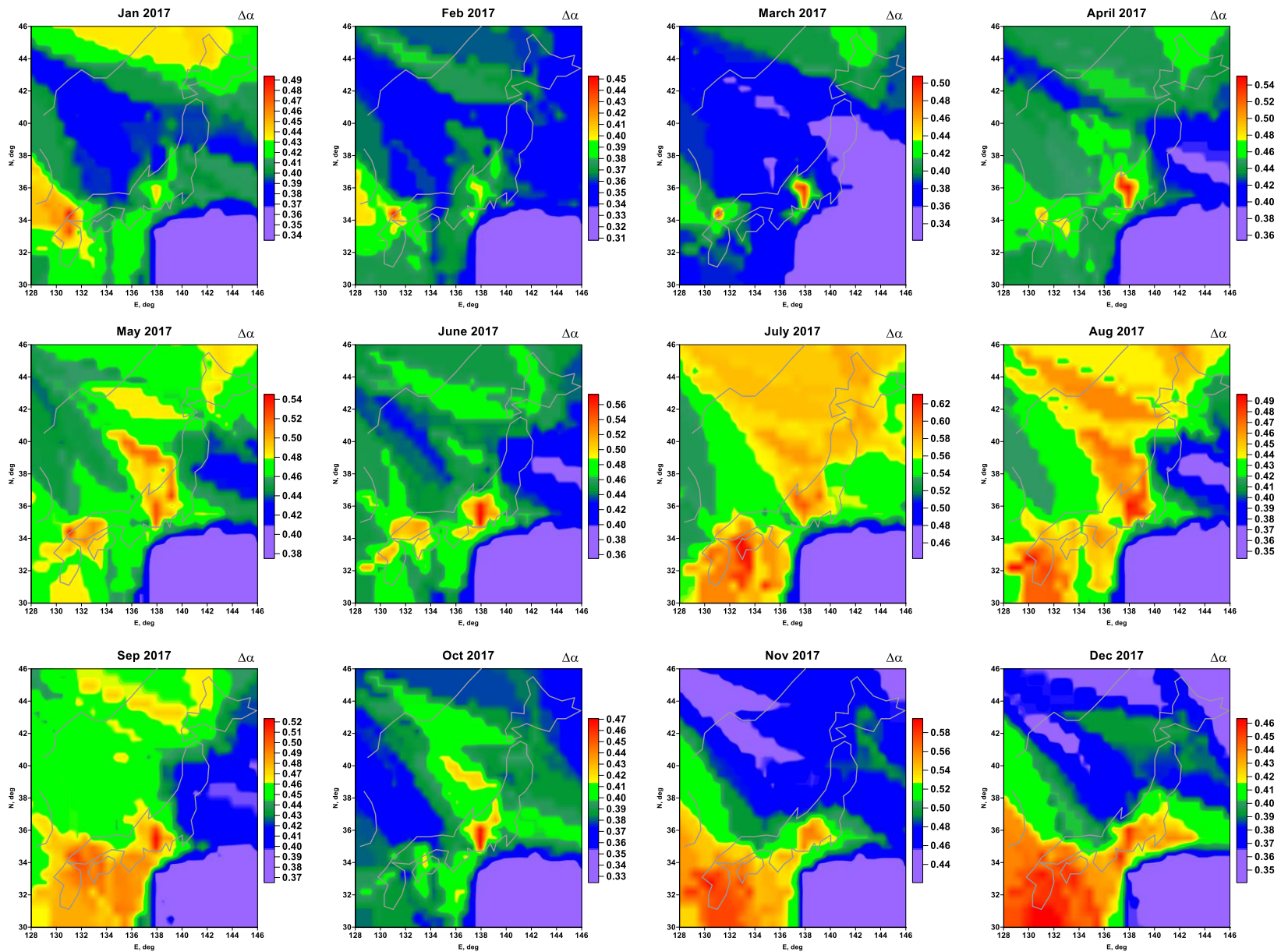
Monthly maps of singularity spectrum support width $\Delta\alpha$, corresponding to 2014



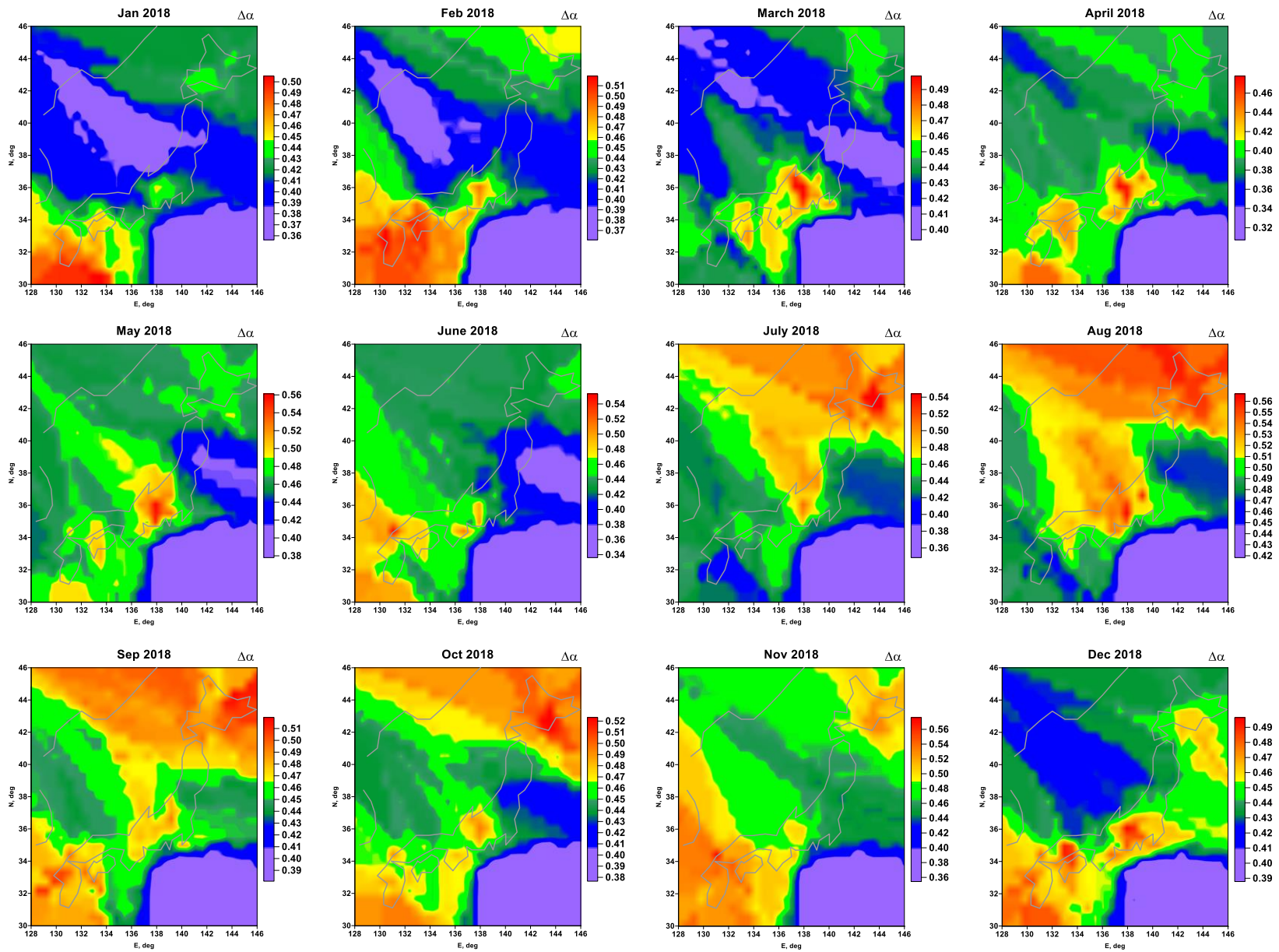
Monthly maps of singularity spectrum support width $\Delta\alpha$, corresponding to 2015



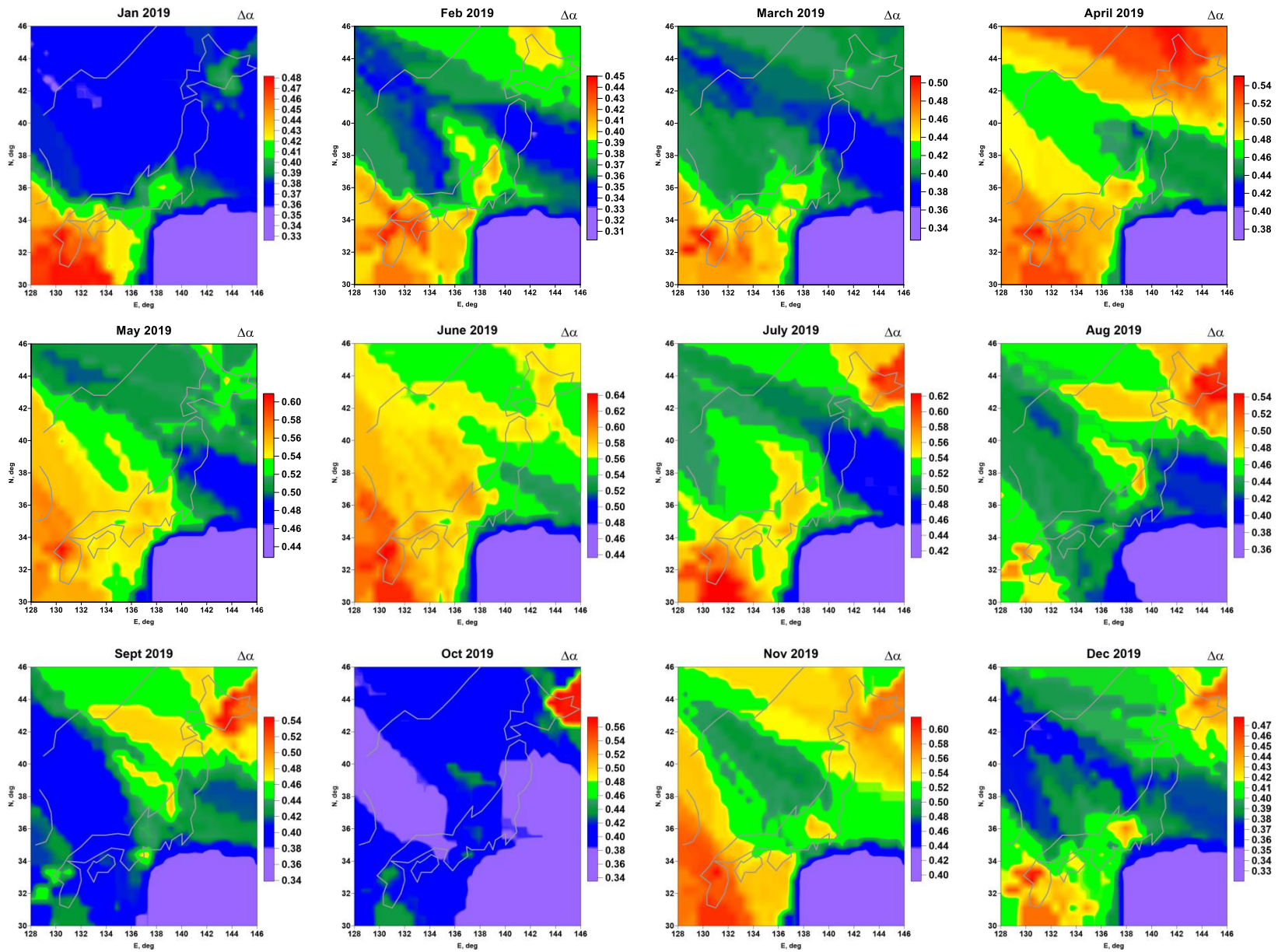
Monthly maps of singularity spectrum support width $\Delta\alpha$, corresponding to 2016



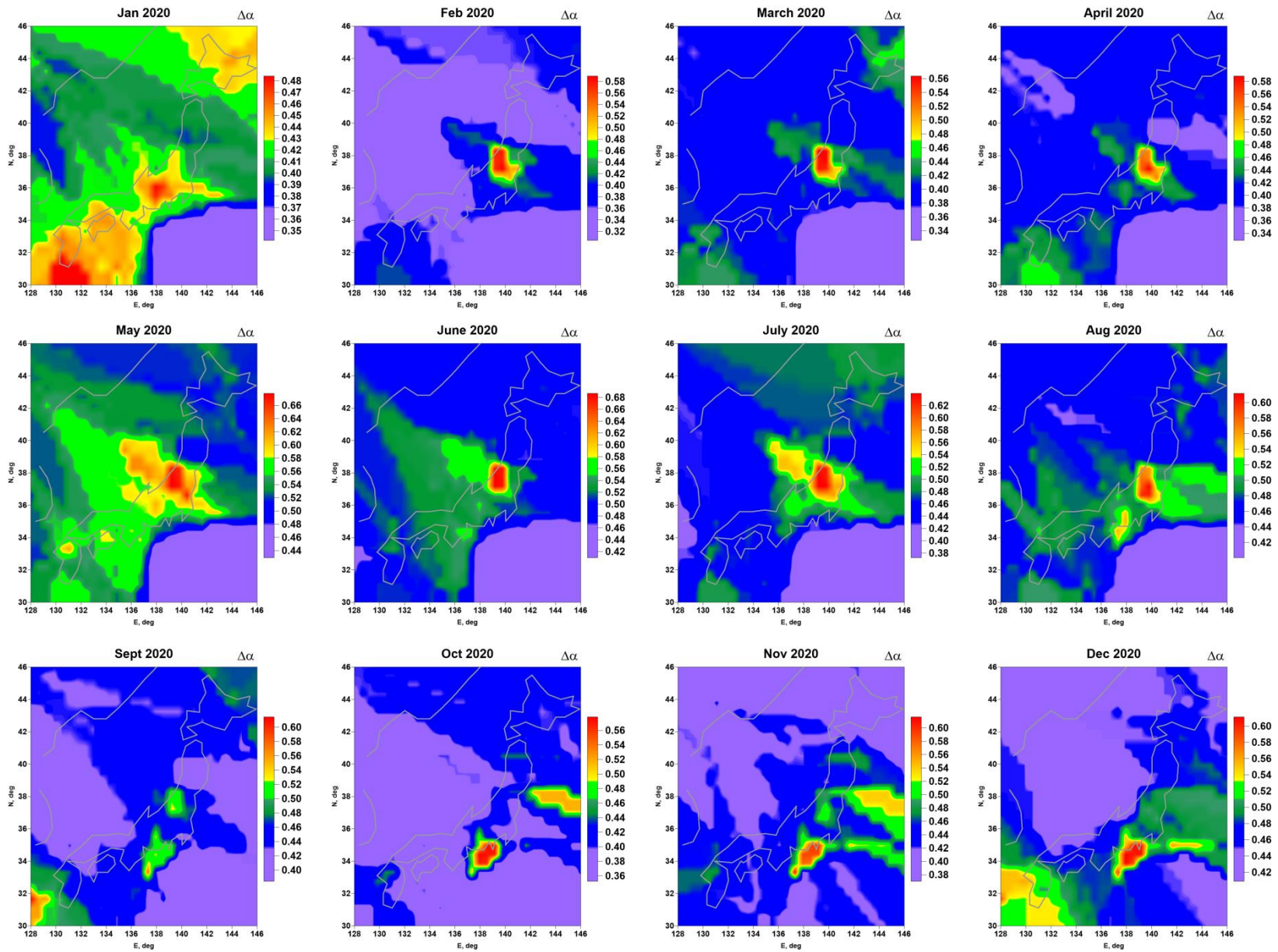
Monthly maps of singularity spectrum support width $\Delta\alpha$, corresponding to 2017



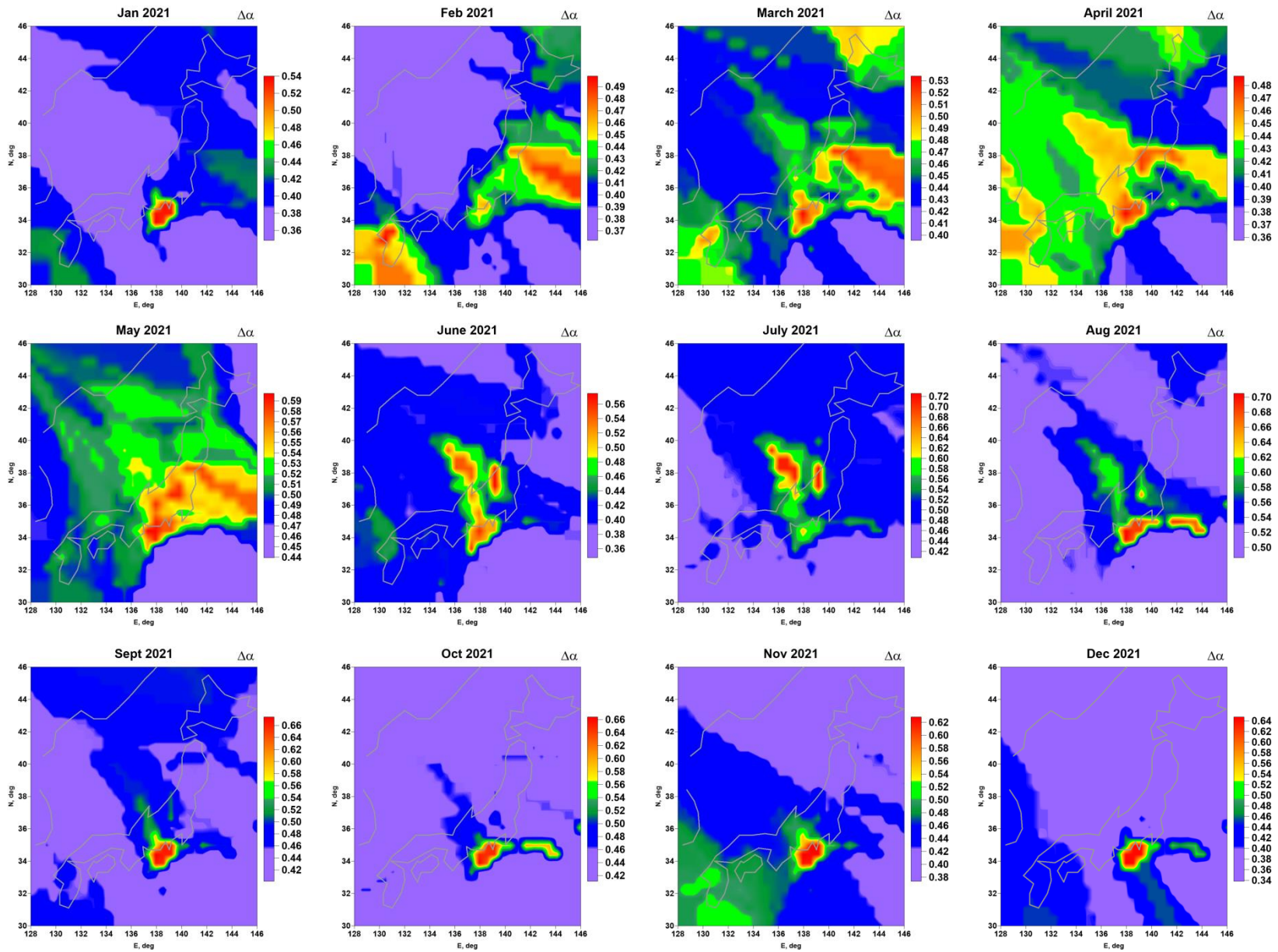
Monthly maps of singularity spectrum support width $\Delta\alpha$, corresponding to 2018



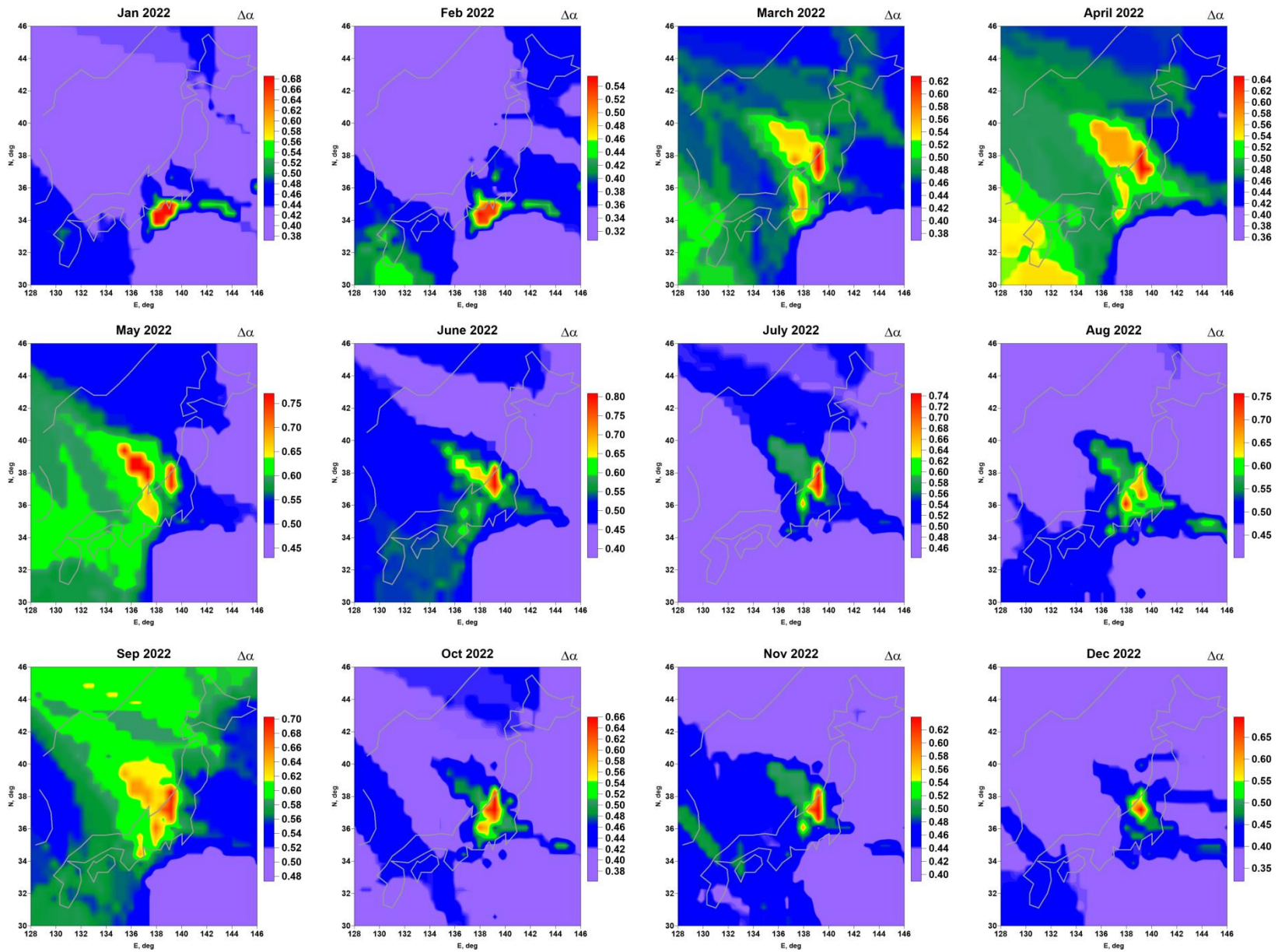
Monthly maps of singularity spectrum support width $\Delta\alpha$, corresponding to 2019



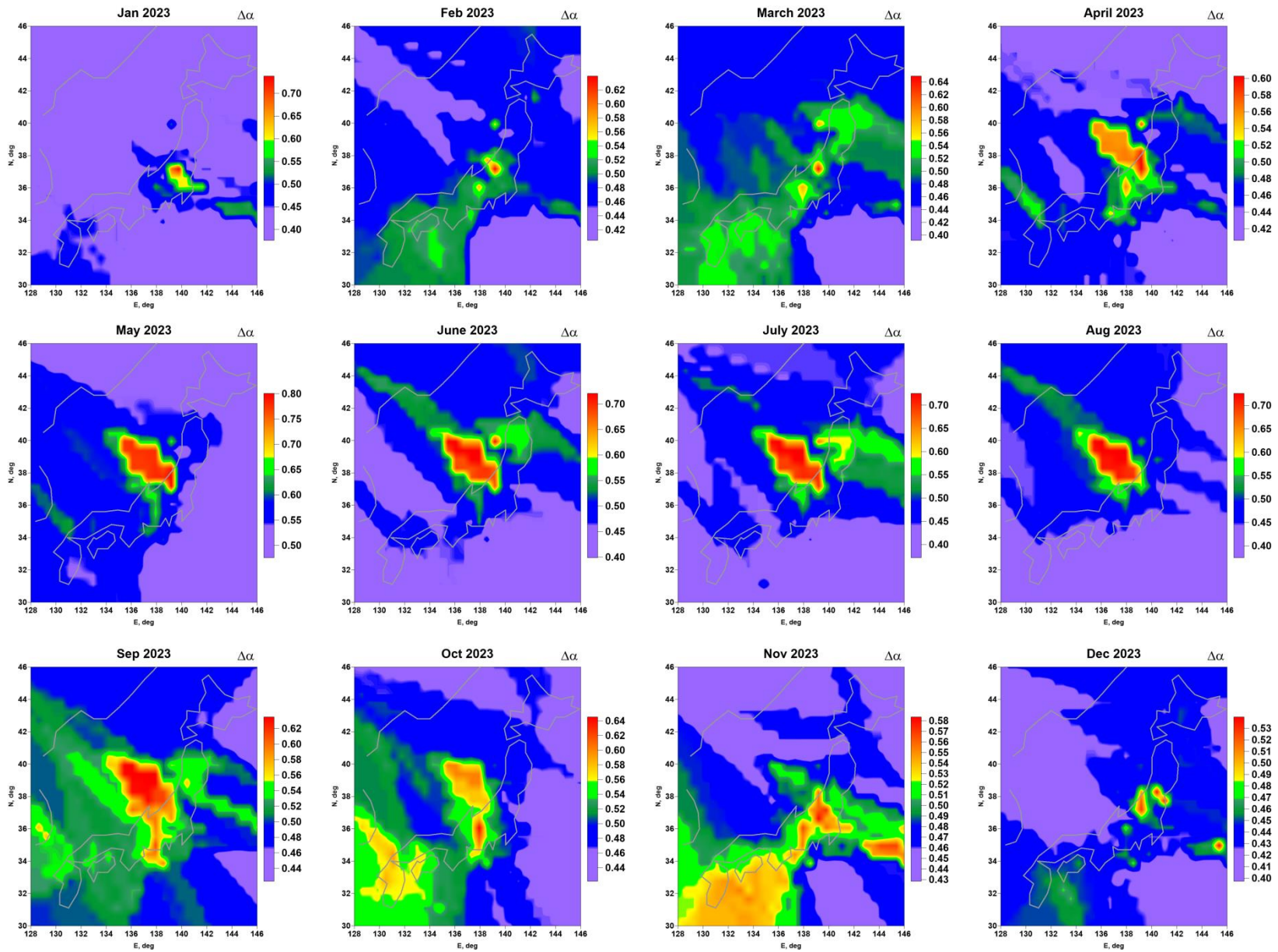
Monthly maps of singularity spectrum support width $\Delta\alpha$, corresponding to 2020



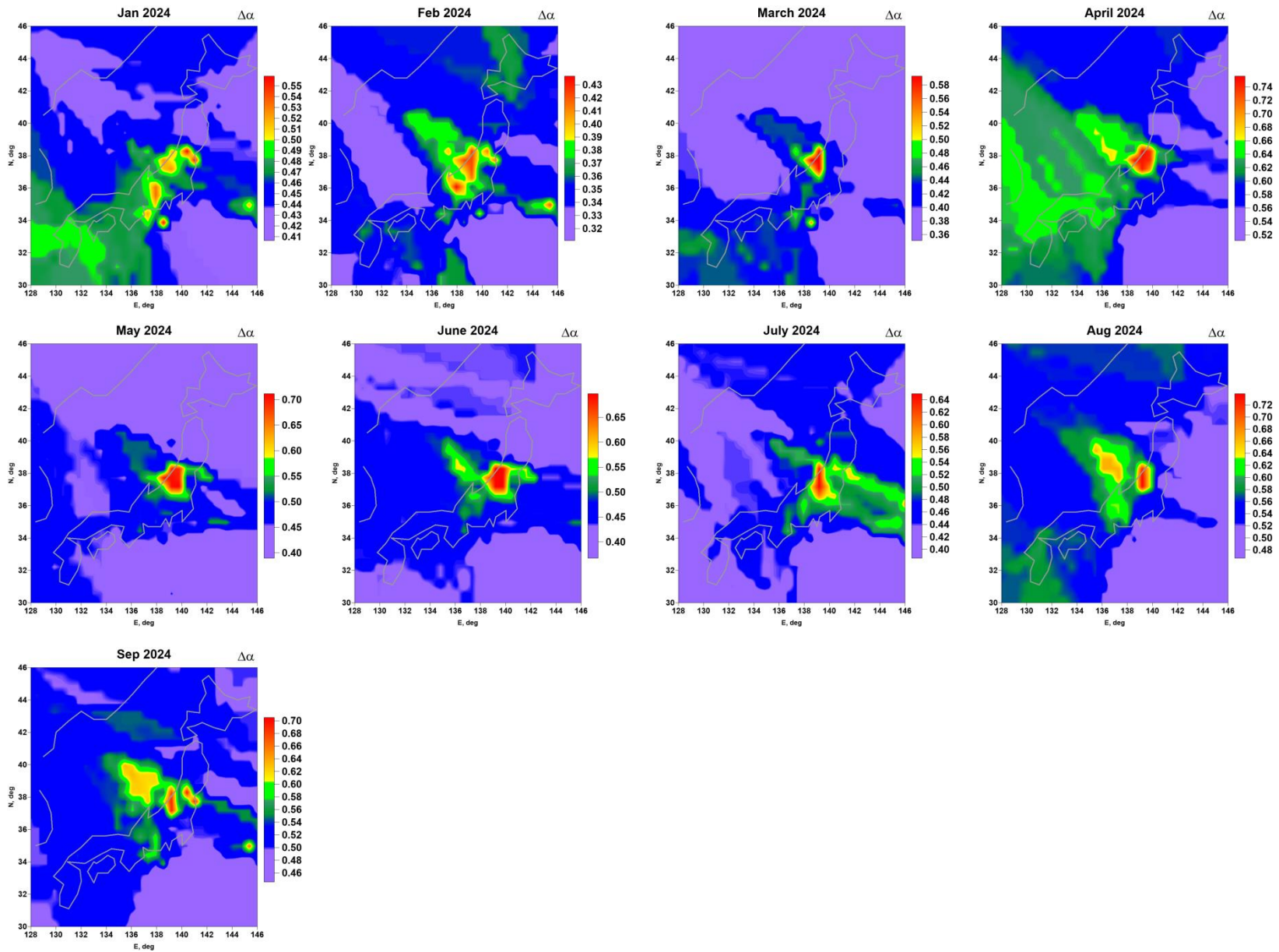
Monthly maps of singularity spectrum support width $\Delta\alpha$, corresponding to 2021



Monthly maps of singularity spectrum support width $\Delta\alpha$, corresponding to 2022

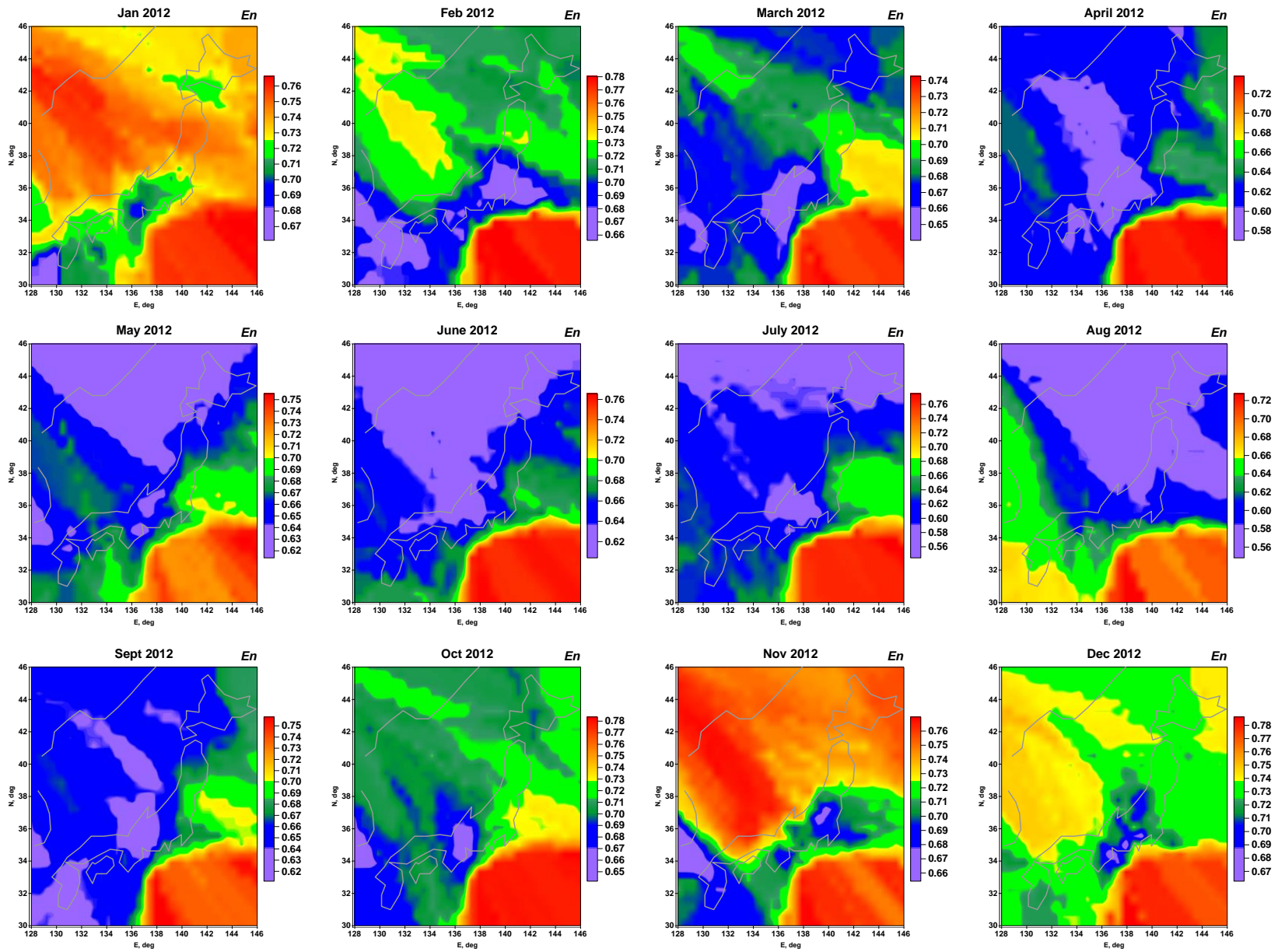


Monthly maps of singularity spectrum support width $\Delta\alpha$, corresponding to 2023

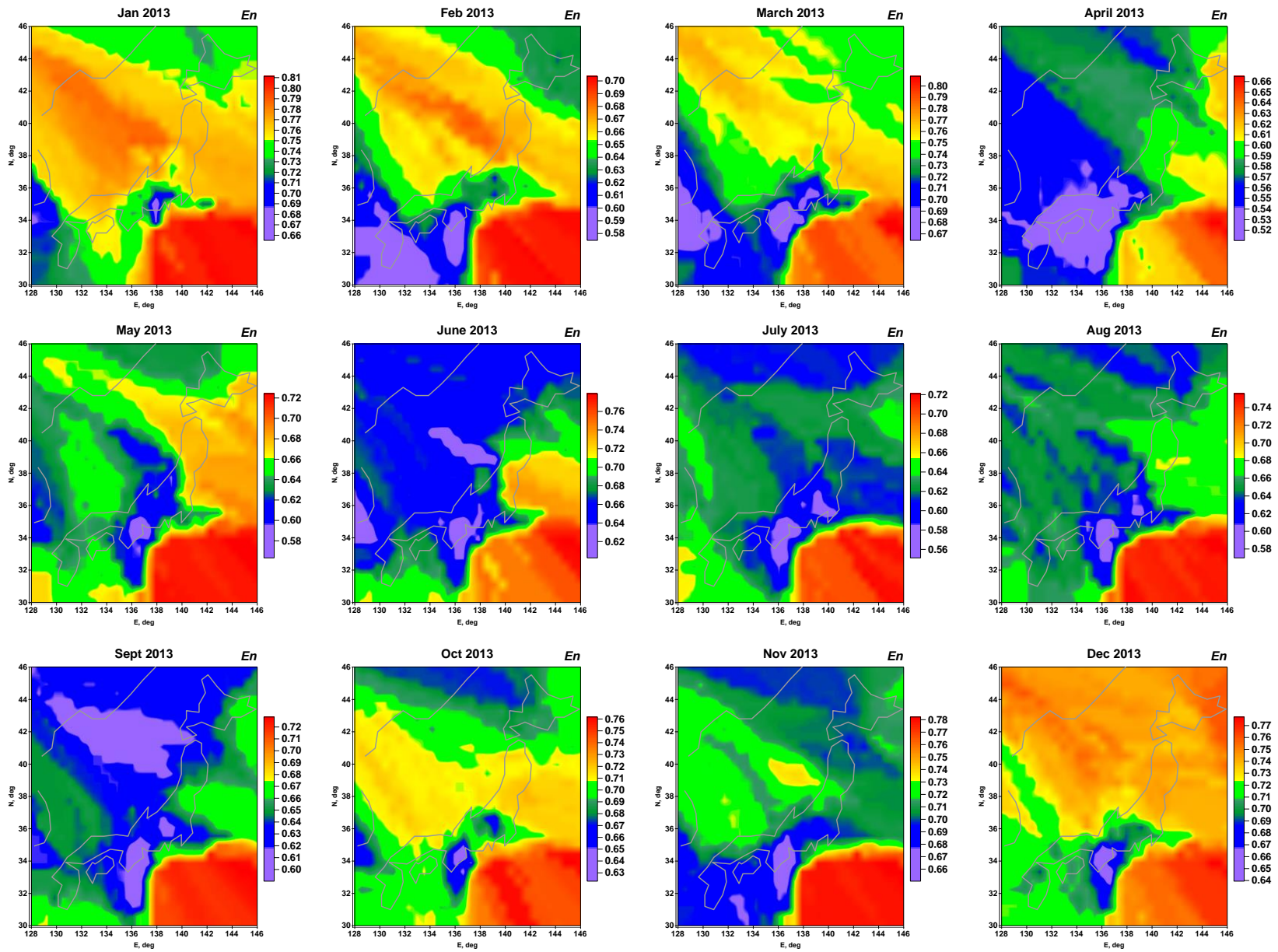


Monthly maps of singularity spectrum support width $\Delta\alpha$, corresponding to 2024

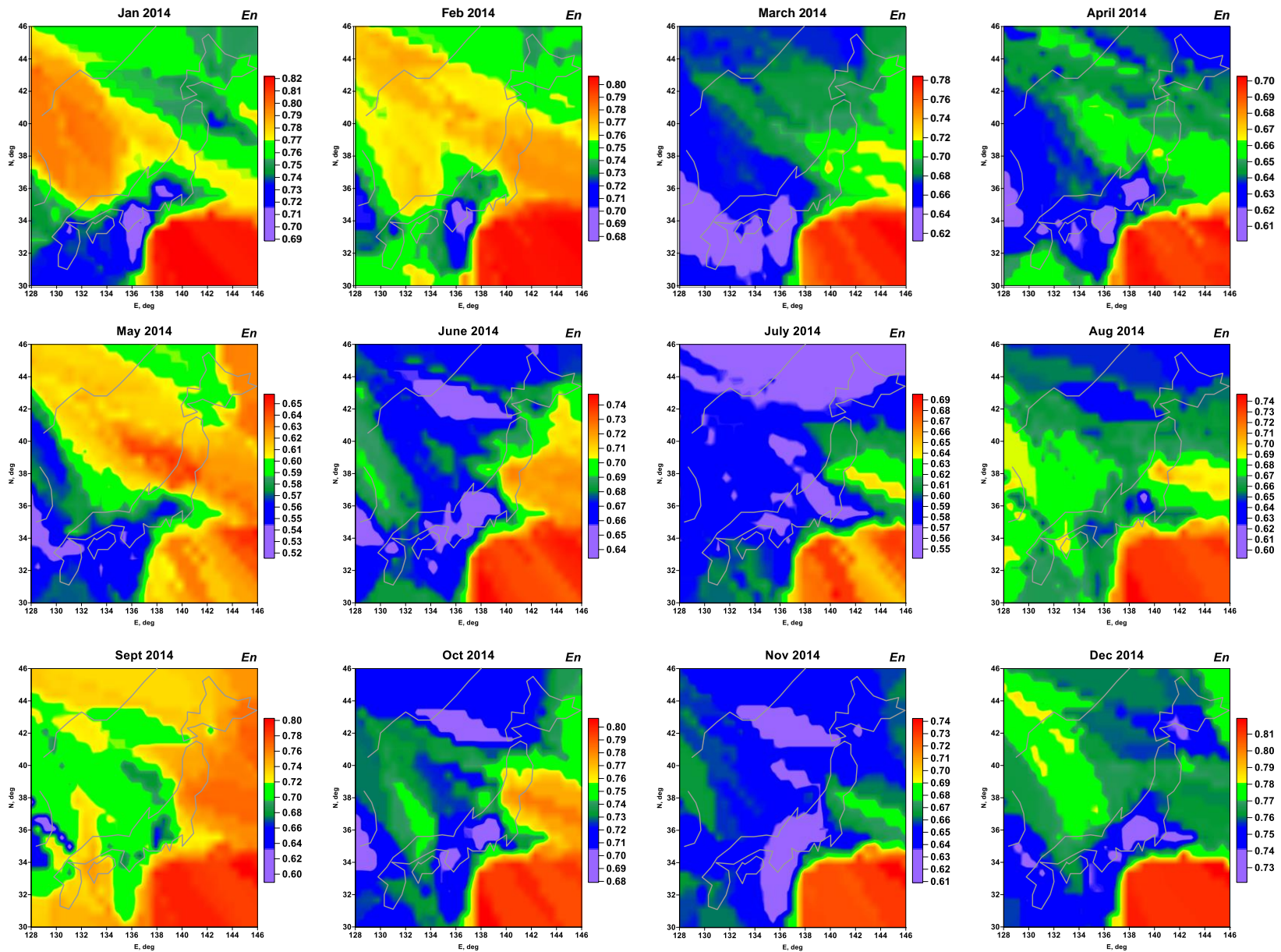
Minimum normalized entropy of squared orthogonal wavelet coefficients for low-frequency seismic noise in Japan – averaged monthly maps



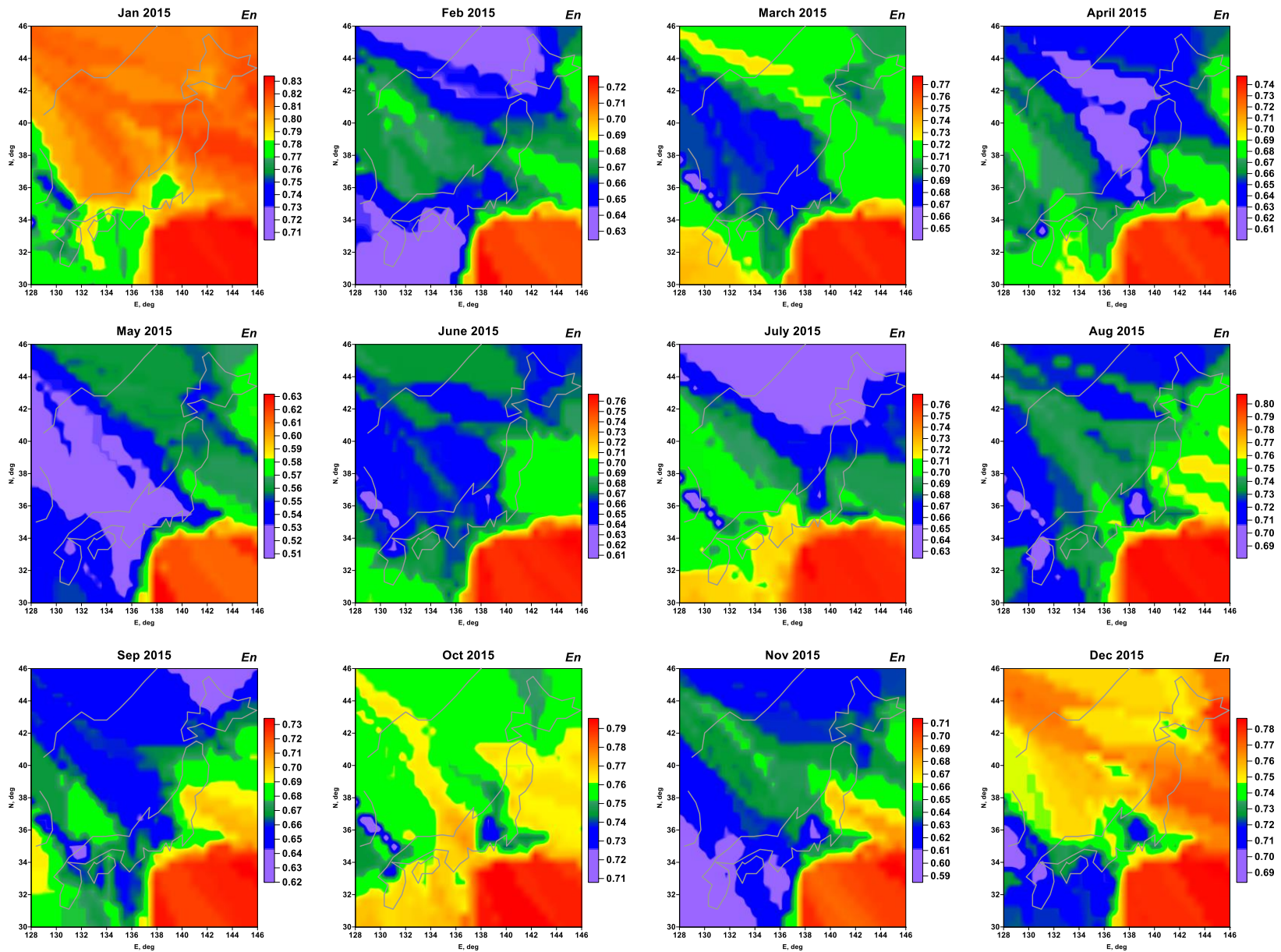
Averaged monthly maps of minimum normalized entropy of squared wavelet coefficients, corresponding to 2012



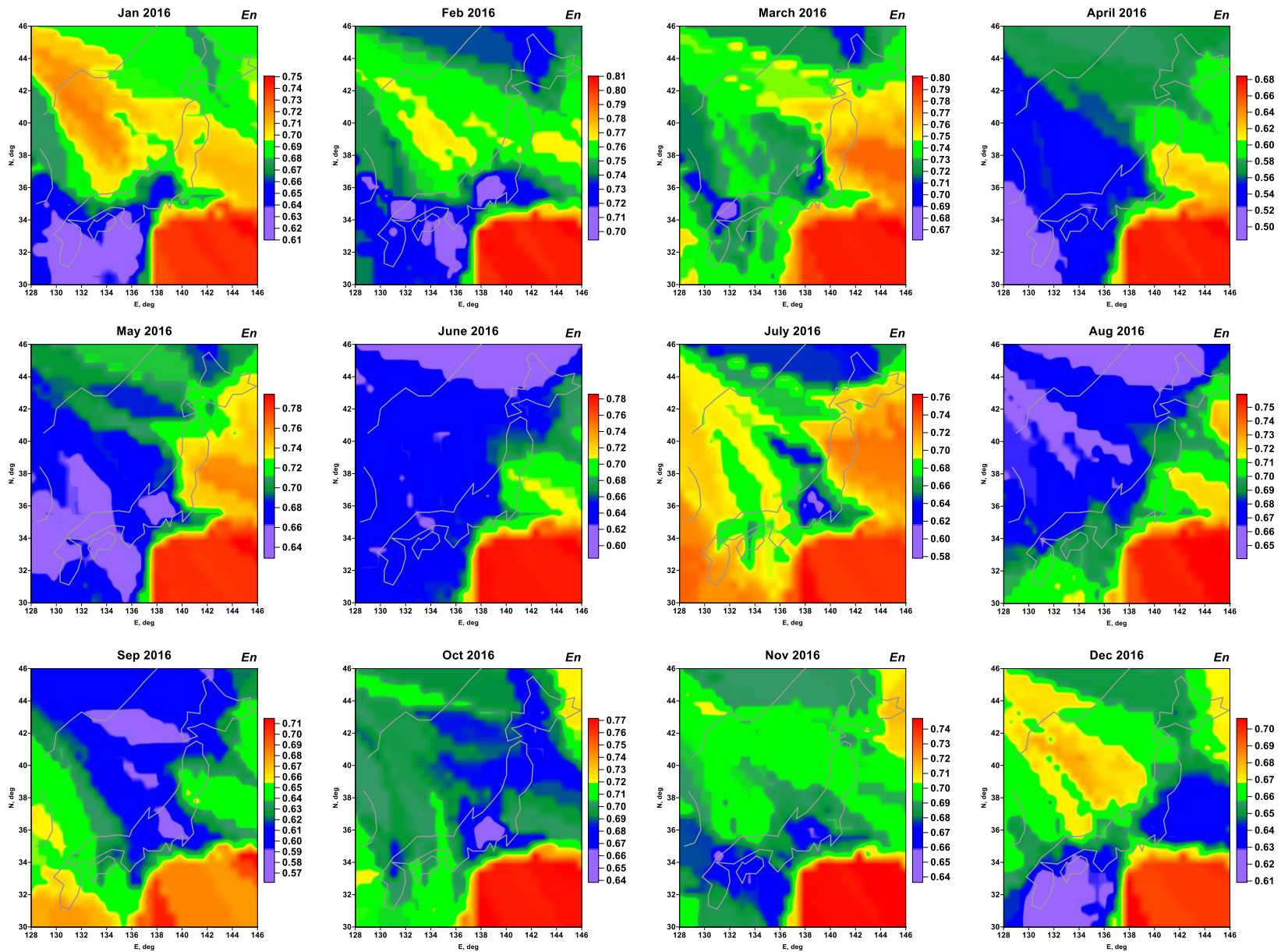
Averaged monthly maps of minimum normalized entropy of squared wavelet coefficients, corresponding to 2013



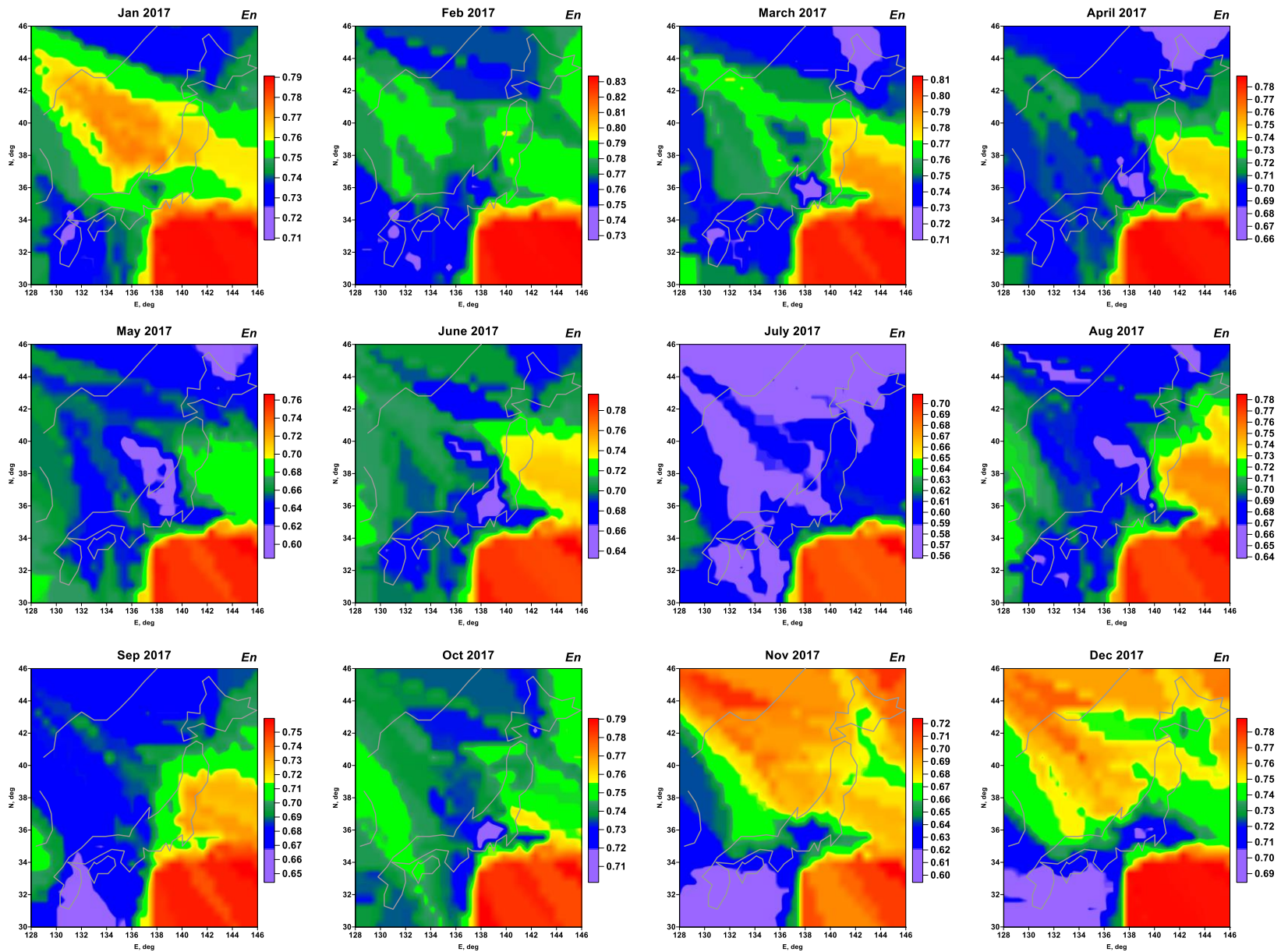
Averaged monthly maps of minimum normalized entropy of squared wavelet coefficients, corresponding to 2014



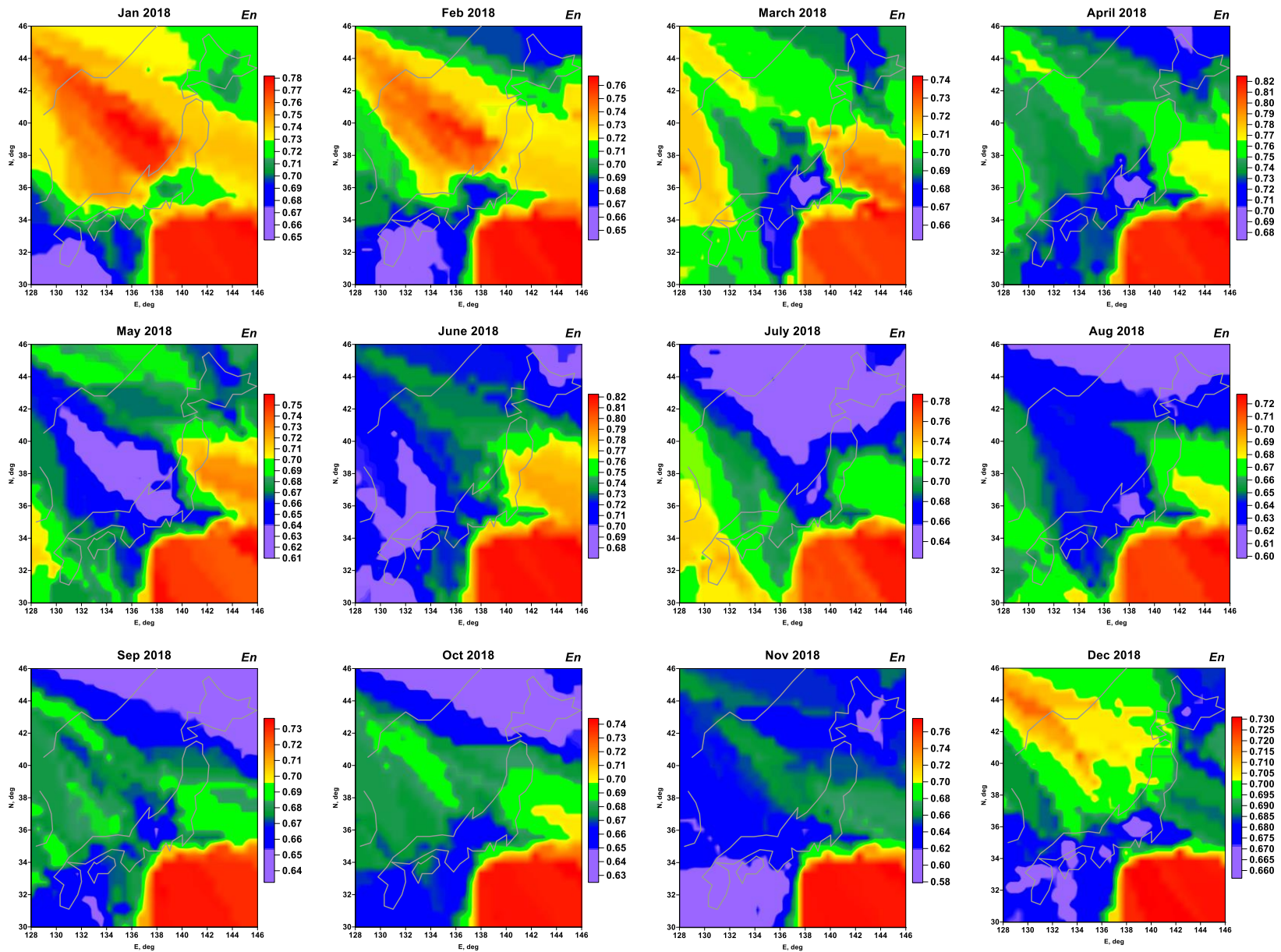
Averaged monthly maps of minimum normalized entropy of squared wavelet coefficients, corresponding to 2015



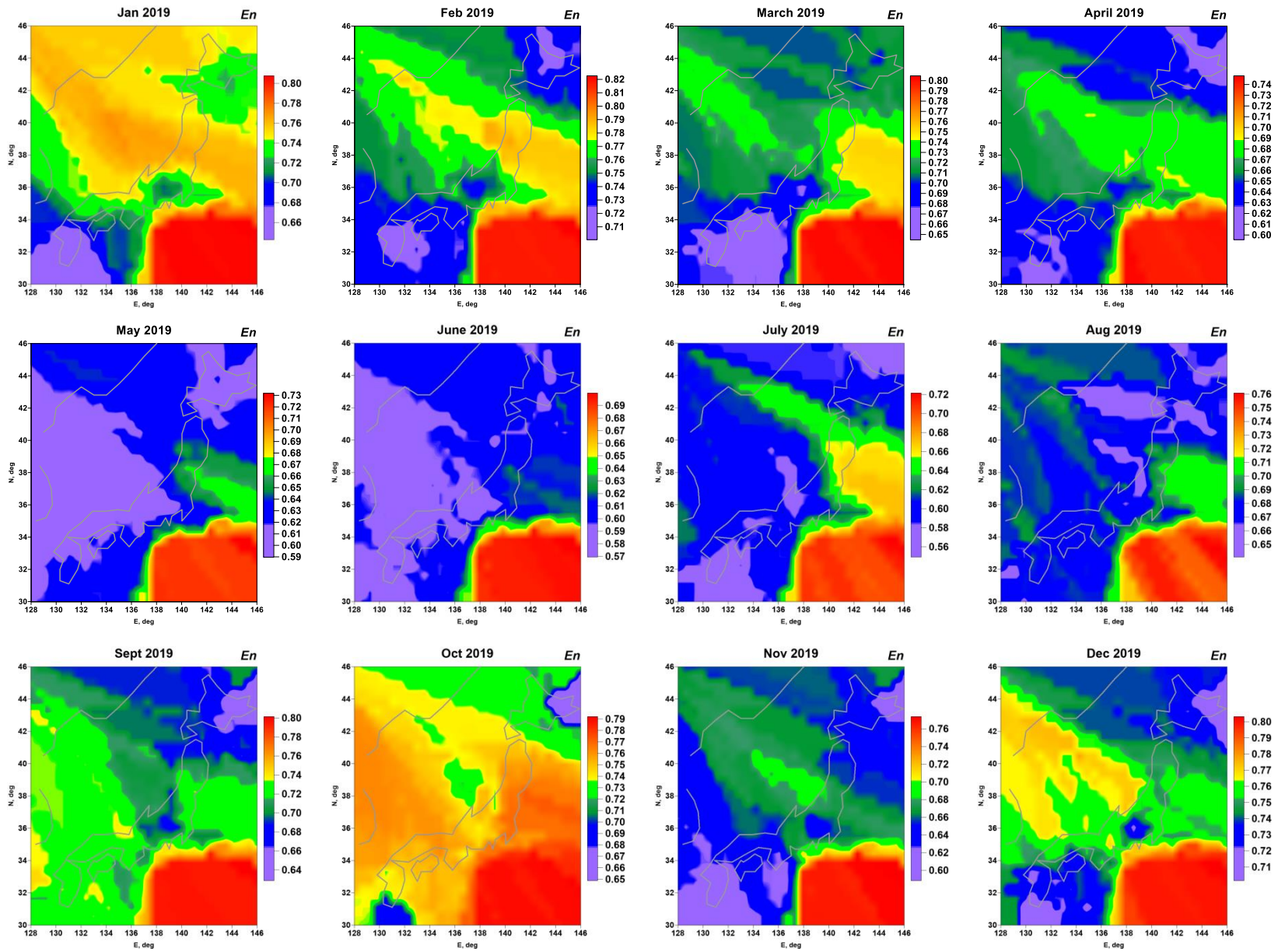
Averaged monthly maps of minimum normalized entropy of squared wavelet coefficients, corresponding to 2016



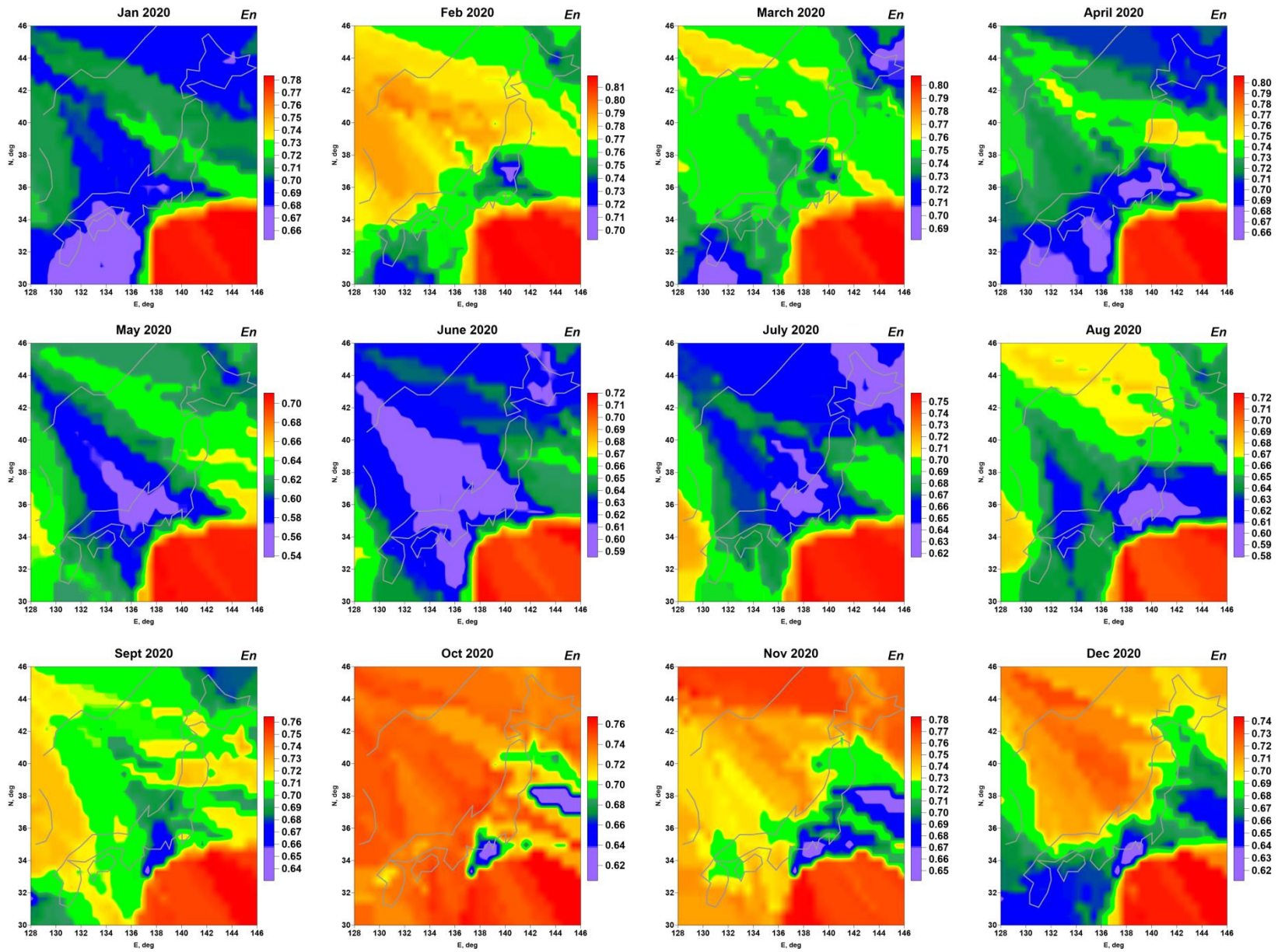
Averaged monthly maps of minimum normalized entropy of squared wavelet coefficients, corresponding to 2017



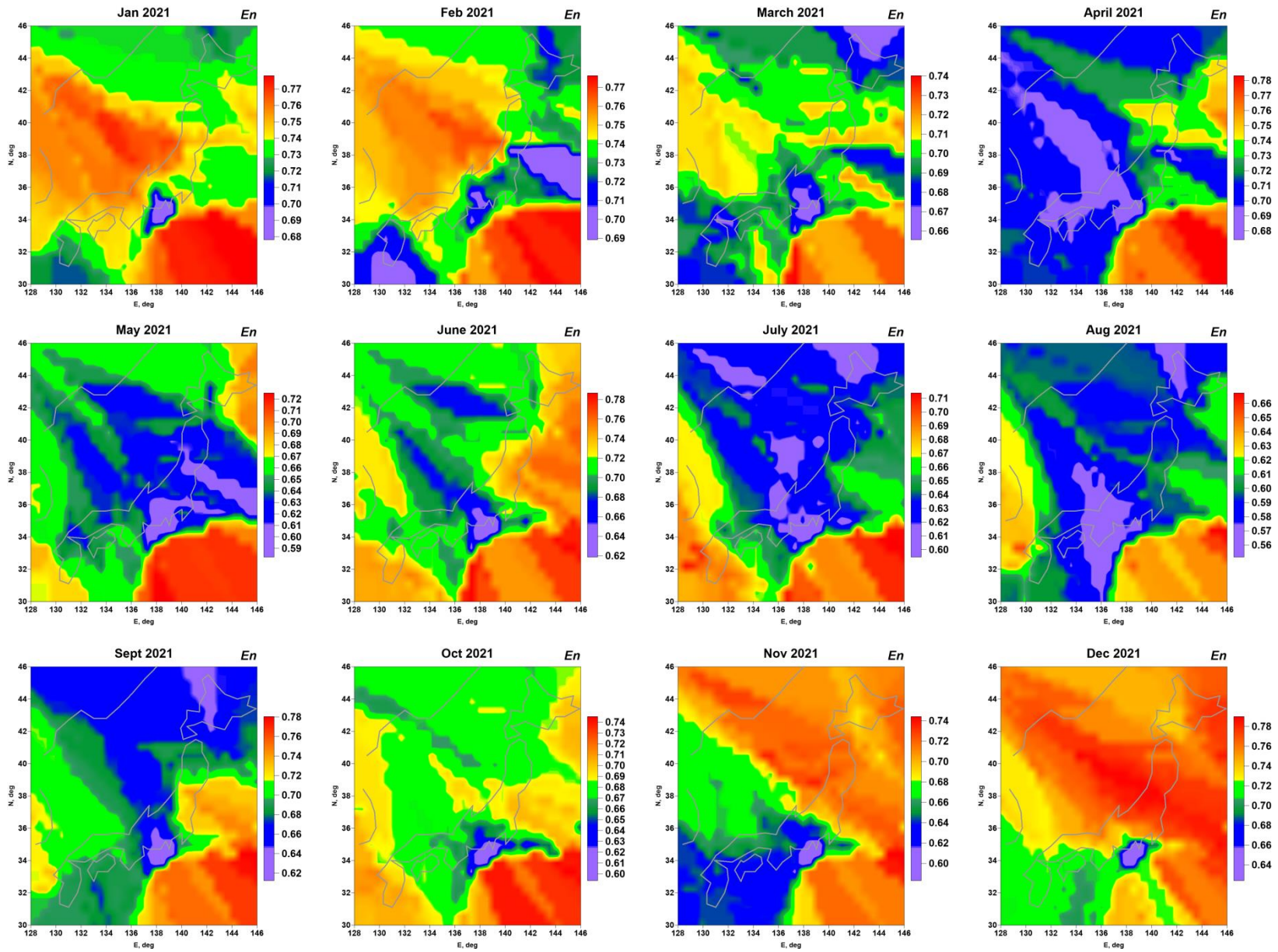
Averaged monthly maps of minimum normalized entropy of squared wavelet coefficients, corresponding to 2018



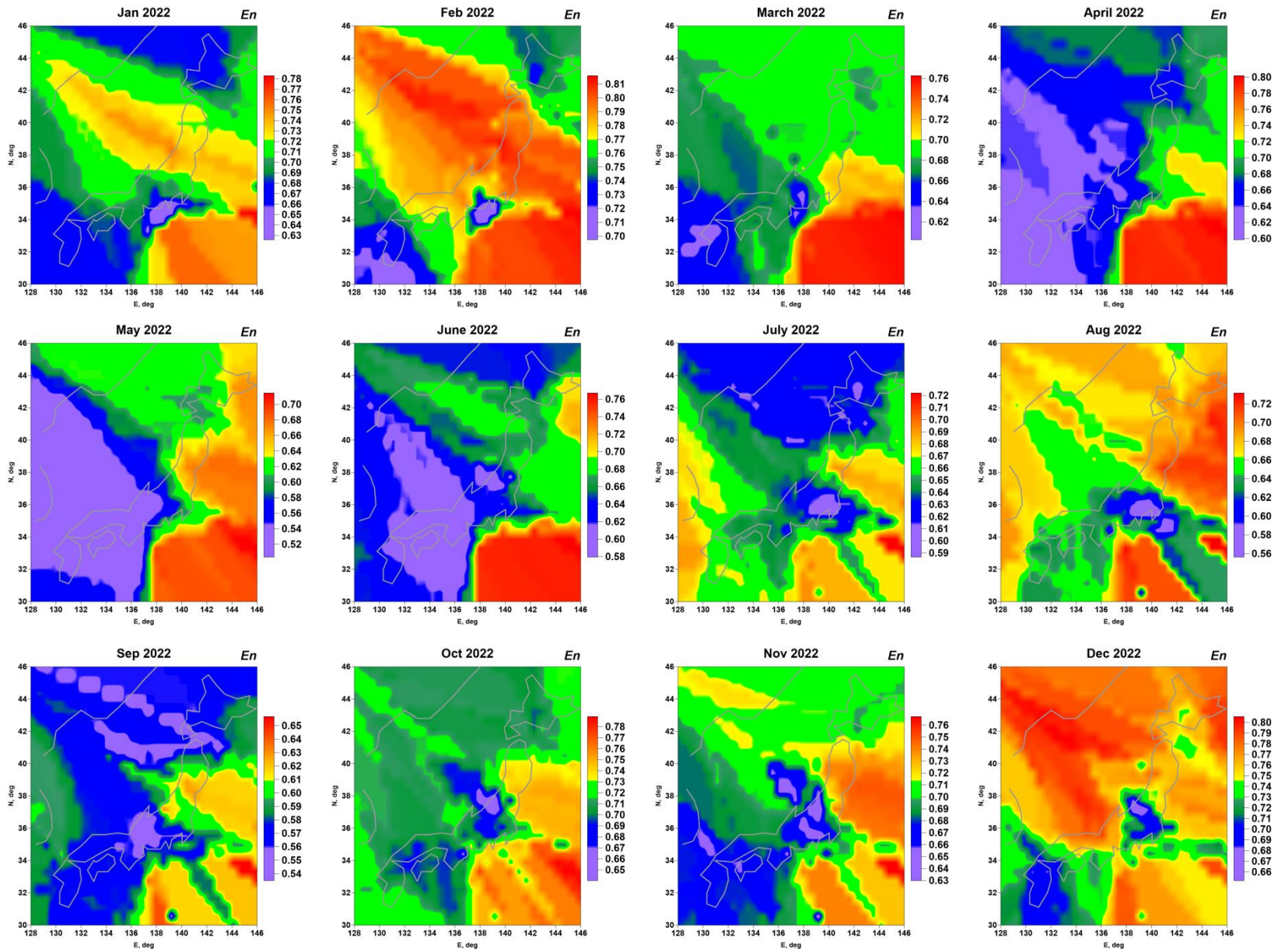
Averaged monthly maps of minimum normalized entropy of squared wavelet coefficients, corresponding to 2019



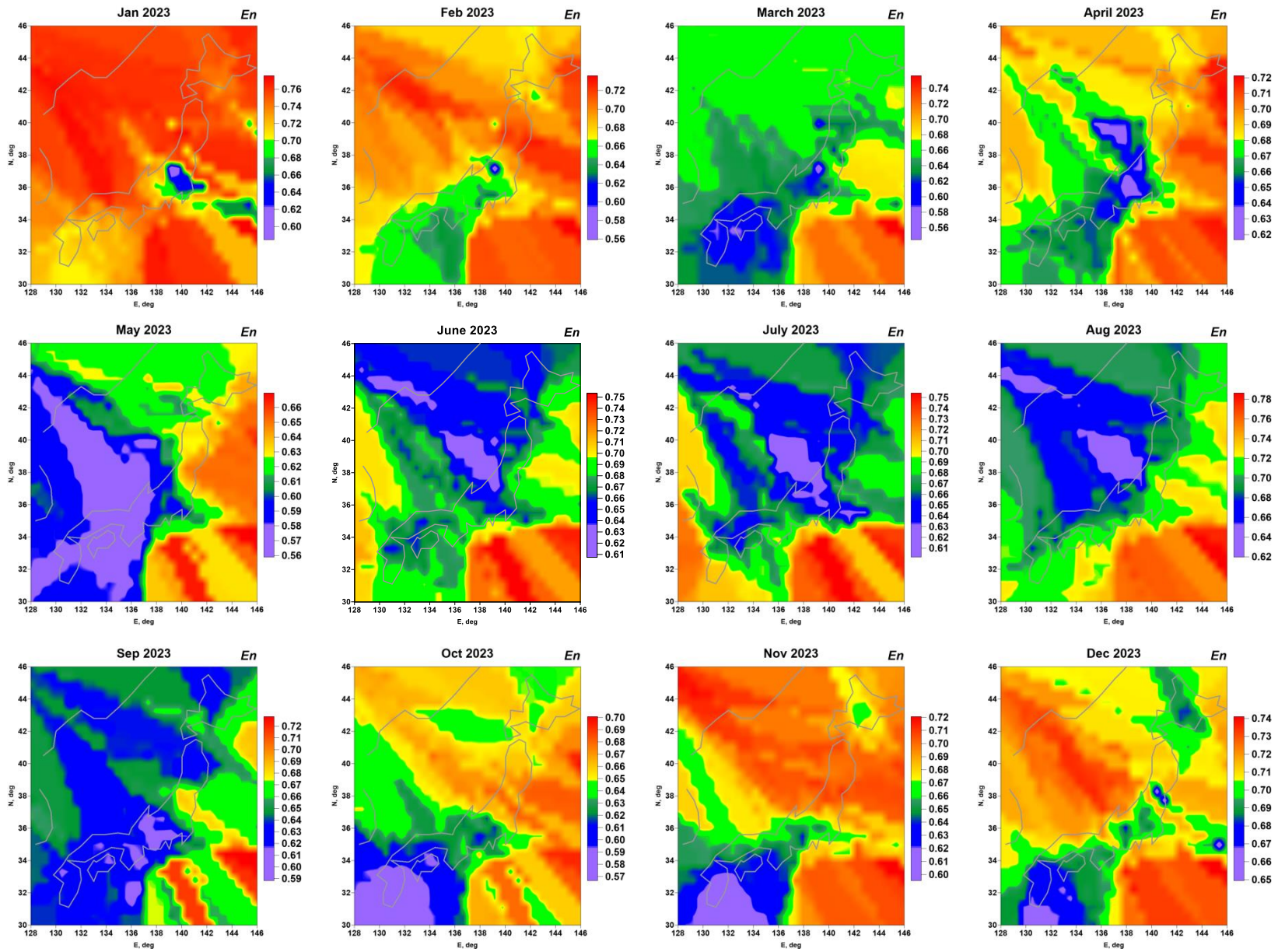
Averaged monthly maps of minimum normalized entropy of squared wavelet coefficients, corresponding to 2020



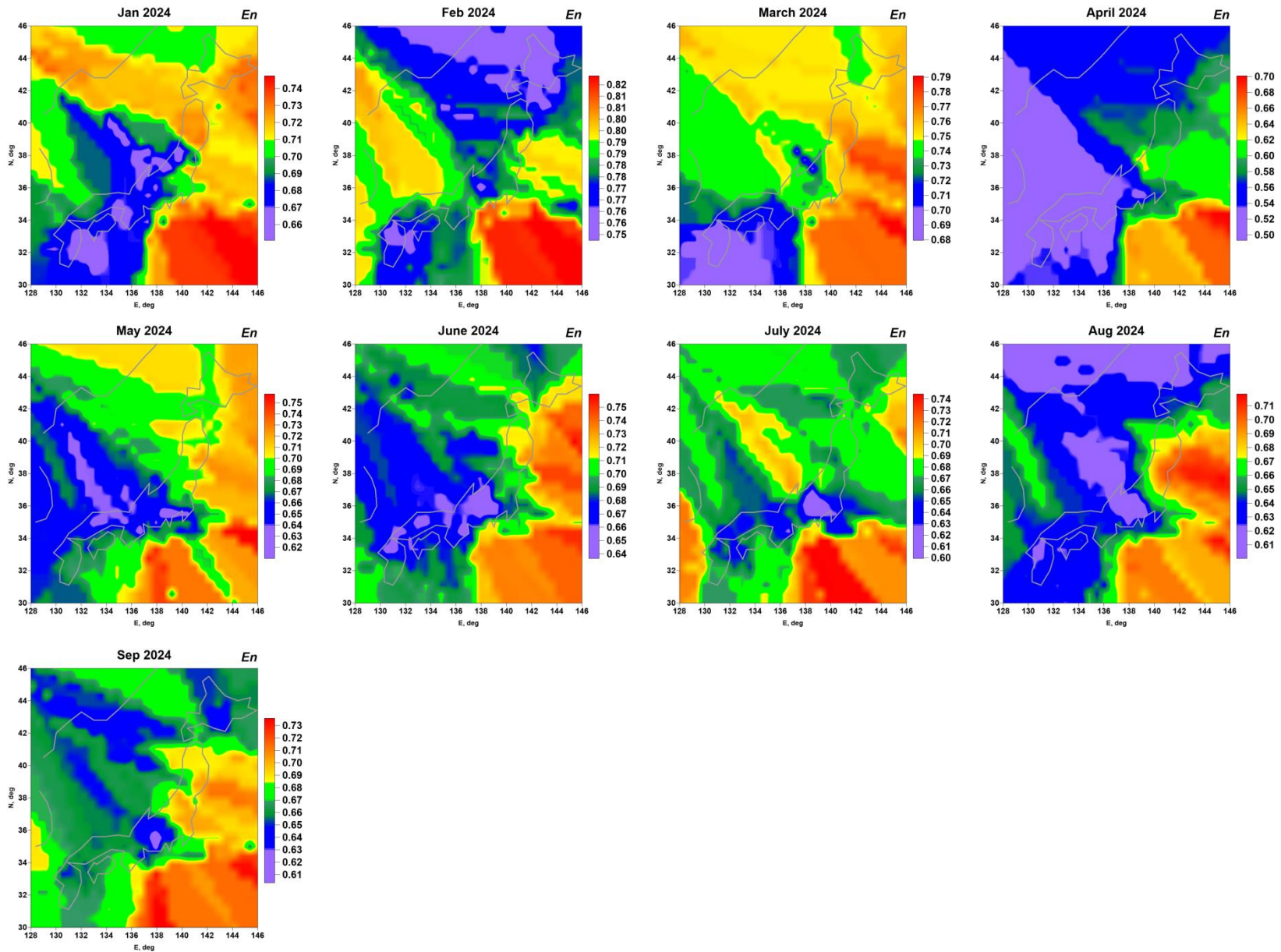
Averaged monthly maps of minimum normalized entropy of squared wavelet coefficients, corresponding to 2021



Averaged monthly maps of minimum normalized entropy of squared wavelet coefficients, corresponding to 2022



Averaged monthly maps of minimum normalized entropy of squared wavelet coefficients, corresponding to 2023



Averaged monthly maps of minimum normalized entropy of squared wavelet coefficients, corresponding to 2024